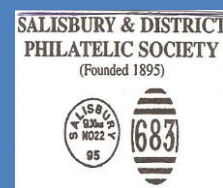


SALISBURY & DISTRICT PHILATELIC SOCIETY



Website address www.salisburyphilately.org.uk

Editor Lindsay Green - email address - lgreen309@btinternet.com tel : 01980 862716

All photographs supplied by the Editor, or otherwise stated.

Introduction

A Summer of mixed emotions for many of our Members but hopefully the thought of a new season of stamp evenings will be looked forward to with anticipation. With luck our new programme will be distributed with this newsletter but if not then soon after; suffice to say it has many highlights. Claire must be thanked for putting together an exciting 'pot-pourri' of evenings (and two day meetings)

for us. Hopefully you will find much to interest you and support us with your attendance. Its good attendance that gets us good speakers. A Thank you all for your continuing support to Stamp Active. I have another box of stamps to send off with hopefully a cheque. Our efforts are recorded on the Stamp Active website. If you go to www.stampactive.co.uk and look under 'About us' and scroll down to 'Friends' you will see us mentioned. Well done Salisbury in encouraging youth philately. At our September Committee meeting we will discuss sponsoring a few frames at London 2015. This will also add our name to the website of the next UK prestigious stamp exhibition. This exhibition will commemorate the 175th anniversary of the issue of the Penny Black. The competition classes at this exhibition were heavily oversubscribed but we have Members of whom will be competing. Details to follow. There is an excellent website of which I would commend to you. www.london2015.net

Needless to say you will already have our next red letter day on the calendar. The 10th September, 'Recent Acquisitions'. It will be great to see everybody again after our Summer break.

Contents of this issue

No 22 - Summer 2014

Introduction -- page 1

Aspects of the Postal Service in
Salisbury -- page 2

A weekend in Belgium -
page 3 and page 4

Musings from the Secretary
page 5 and page 6

The Wounded Soldier's Story
Page 6

Request for WW1 items
Page 7

Programme
Page 8

Aspects of the Postal Services in Salisbury and District

Canadian Contingent on Salisbury Plain

By
Jeremy Martin

Something different this time. This is a picture postcard written at Steeple Langford on April 1st 1915 with a rubber cancel at the same village.



The inscription on the card is headed 'The Pet of the Regiment' followed by an extraordinary assortment of mascots and pets accompanies the Canadian Contingent'. Dogs and goats and other animals are numerous. One regiment actually adopted a small boy, a news paper seller, who was anxious to go with them. He was smuggled somehow on to a transport, and has since become a bugler.

The illustration on this card is of 'Bruin'.
THE PET OF THE HEADQUARTERS STAFF.

The Roll of Distinguished Philatelists Ceremony Ypres Belgium, 2014

by

Lindsay Green

Friday the 11th July 2014 at the unearthly hour of 4.00a.m, fully loaded we left Salisbury, to catch the 8.00 a.m. ferry at Dover. By lunch time we had arrived at our destination, 'The Market Sq'. Ypres. Settled in, having been to see our friend in the north of Ypres, we had a collection at the railway station, Jeremy Martin and friend Sandra. I was not sure of the details of this event, so I asked. This is held once a year, usually held in Great Britain, but this year because of WW1 it was held in one of the most battle torn areas, Ypres in Belgium. Who are the people whom belong to this special society, well they are people who stand out in their pursuit of collecting. The Country hosting the event always show their Countries, this year it is Belgium stamps.

Not being privy to the events of the 'Ceremony', I can only give basic details, a presentation was held on Saturday, this is when new distinguished philatelists are enrolled, [the reason for the event]. After lunch already dressed for the evening events, it started with being taken along the road to the 'Menin Gate'. Photos were taken by the official photographer, but as usual I got mine in as well, held in the Menin Gate, a memorial to some of those who lost their life on the Salient



Awaiting for the order to play

I had already by this time been to the exhibition of Belgian stamps held in a building opposite the Cloth Hall. Most importantly the Queen had and exhibit, titled 'The Versailles Peace Conference' [subject to the very tight security] .



Jeremy had two frames under the heading 'Emergency Postmarks 1918-1919'.

Whilst speaking to the VIP's this little Scottish voice stood out a mile, and there standing in front of me was Margaret Morris, who had displayed to us at Salisbury on 'Observatories'.



Claire and John Scott were also there and under 'The Wounded Soldier's Story' Claire had 14 frames.

*Can I say well done to
Salisbury & District Philatelic Society.*

Musings from the Secretary

By

Mike Moody

Every time I visit or pass Dauwalders there are customers in there, the majority of whom are probably stamp collectors. Excluding those who travel from a distance and maybe belong to other stamp clubs, there must be many who live in our catchment area. Yet so few join us. This made me wonder why I had joined and why so many don't join.

In no particular order these seemed to be the reasons why I joined. I was able to learn from other members how to write up my collection, what to collect, and how to improve my layout and presentation. The more experienced members were happy to share their knowledge and I was usually able to get my stamp questions answered. By listening to some fascinating lectures, I have improved my knowledge not just of stamps but of history and geography. The option of presenting at members' evenings forces me to look at my collection and start removing items from cardboard boxes and plastic bags and to write them up. The generosity of members in bringing in catalogues and magazines for general use has been a great help. Although perhaps this should have been listed as a disadvantage as it has proved to be rather expensive. There is of course just as importantly the pleasure and friendship of being part of very diverse group of like minded people who are excellent company (gifts of alcohol and chocolates gratefully received!). **All this for just £10 a year.**

But why do many people not join or don't remain as members for long. Someone who is a member is probably not the best person to comment. But some thoughts. Stamp collecting is a solitary hobby and perhaps attracts people who prefer their own company. We are an ageing group and maybe some of us no longer have the energy or get up and go to leave the TV for a meeting. The standard of some collectors is so high that it can become quite intimidating for the average collector both when we look at our own collections and when we want to present. Presenting can also be a difficulty for many people and perhaps off putting to new members. Many members of any

society have known each other for a long time and they tend to stick together; perhaps unintentionally excluding newer members.

As I said just some thoughts. What do other members think?

You can send me anonymously your comments, if you do not wish to put your name against your thoughts, but I would like to hear from you. Ed.

THE WOUNDED SOLDIER'S STORY
By ambulance to field hospital - Part 1

By

John Scott

From the first aid post, the soldiers would be taken by ambulance to the nearest field hospital, each of which would have had attached to it a number of vehicles and wagons pressed into emergency service, some motorised but many others horse drawn. Being attached to army groups near the front line and not at any fixed location, the cachets which enable us to identify these units are usually anonymous, often being inscribed simply with the word 'Ambulance', and sometimes bearing the number of the unit followed by the army corps number, as in 'Ambulance 10/1' which was attached to the 3rd Field Hospital of the 1st Army Corps. Occasionally the sender will write a helpful return address on the envelope which identifies his unit but seldom, for reasons of censorship, is there any geographical location other than the French army sector number of the Field Post Office.

While the walking wounded would have made their own way to hospital, there were many who were too severely wounded even to with stand the short ambulance journey and surgical ambulances were created in 1914 to provide emergency operations even nearer to the battlefield. The brainchild of Maurice Mareille, the first prototype was delivered to the Army Corps in 1918 there were over forty attached to the various army corps.



www.stampandcoin.co.uk

Article first published in Stamp & Coin Mart magazine, find out more about the popular stamp collecting magazine at:

www.stampandcoin.co.uk

Display in the Library Window.



Should you get your news letter before the end of August I am looking for new window material. Ed.

Send it by pdf as an email - ring me - so I may collect. Ed.

Programme dates for 2014-15

September 10th - 24th
October 8th - 15th- 29th
November 12th 26th
December 10th
January 21st
February 18th
March 4th - 18th
April 1st - 15th - 29th
May 6th - 20th.

Don't forget our day meetings
they are something to write home about.
October 8th 2014 and 4th March 2015.
Our last day meeting March this year, excelled itself
by having more people than ever.

COME AND JOIN US

MEETING PLACE

Held at the SCOUT HUT, HARNHAM.

Evenings 7.15p.m for 7.30p.m

Daytime 10.00a.m for 10.30a.m